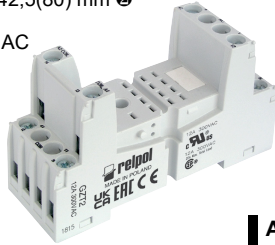


# Sockets and accessories

## GZT2

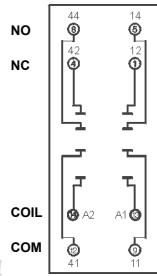
For R2N

Screw terminals  
Max. tightening moment  
for the terminal: 0,7 Nm  
35 mm rail mount  
acc. to EN 60715  
or on panel mounting  
76,3 x 27 x 42,5(80) mm Ⓜ  
Two poles  
12 A, 300 V AC

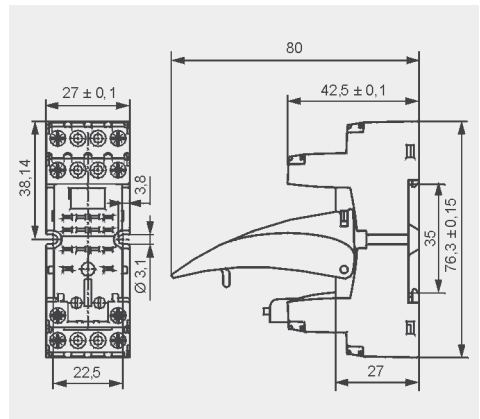


### Connection diagram

### Installation instruction



### Dimensions

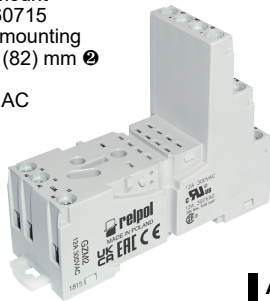


### Accessories

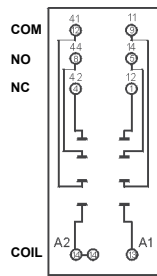
## GZM2

For R2N

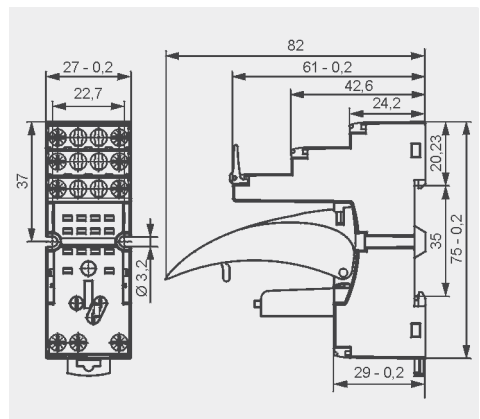
Screw terminals  
Max. tightening moment  
for the terminal: 0,7 Nm  
35 mm rail mount  
acc. to EN 60715  
or on panel mounting  
75 x 27 x 61(82) mm Ⓜ  
Two poles  
12 A, 300 V AC



### Connection diagram



### Dimensions

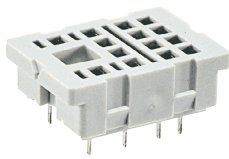


### Accessories

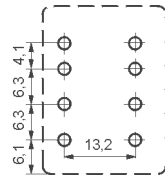
## SU4/2D

For R2N

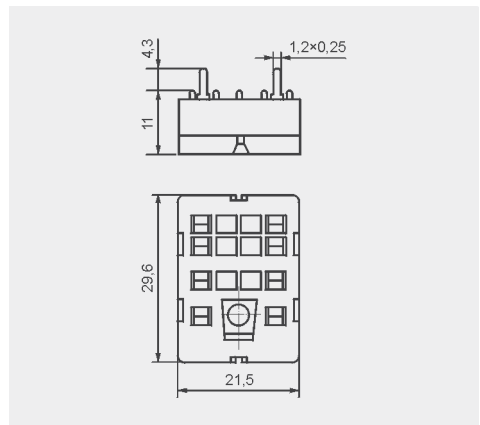
For PCB  
29,6 x 21,5 x 11 mm  
Two poles  
12 A, 250 V AC



### Pinout



### Dimensions



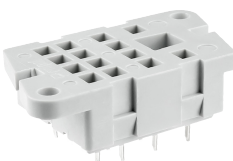
### Accessories

G4 1053

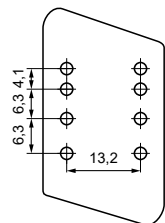
## G4D/2

For R2N

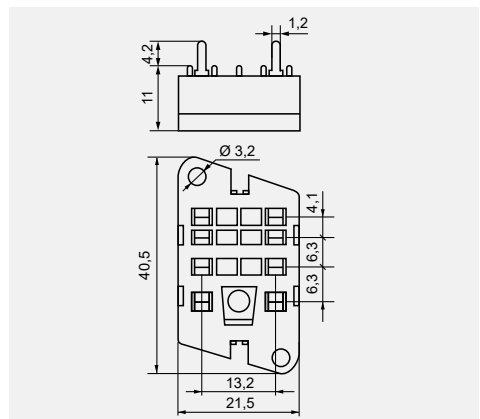
For PCB  
40,5 x 21,5 x 11 mm  
Two poles  
12 A, 250 V AC



### Pinout



### Dimensions



### Accessories

G4 1053

Ⓜ Mounting and sub-assemblies of accessories in the socket; Signalling / protecting modules type M... - see [www.repol.com.pl](http://www.repol.com.pl)  
Ⓜ In the bracket the height of socket with retainer / retractor clip is shown.